

The Cromwell

4 Bedroom Home

The Cromwell is a comfortable four-bedroom detached home with a single detached garage and a driveway with either one or two off-road parking spaces.

The entrance hall opens out into a spacious dual-aspect lounge with a traditional bay window to the front.

At the back of the property is the large kitchen diner, complete with modern appliances. It overlooks the rear garden, which is accessed via French doors.

There is a downstairs cloakroom off the hall.

The first floor boasts four bedrooms, two doubles and two singles, and a family bathroom. The master bedroom also benefits from an en-suite shower room.

The Cromwell is available in a traditional stone or red brick finish.



The Cromwell

4 Bedroom Home

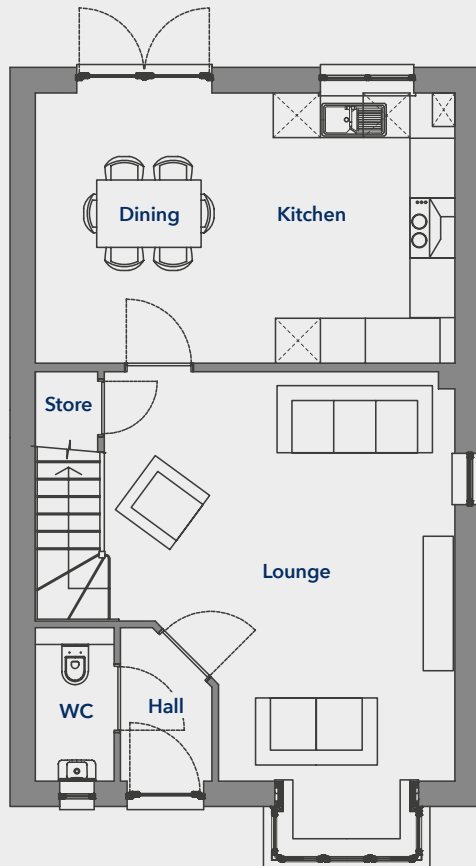
First Floor

Bedroom 1	3674 x 3156mm	(12' 0" x 10' 4")
En-suite	2150 x 1386mm	(7' 0" x 4' 6")
Bedroom 2	3212 x 2882mm	(10' 6" x 9' 5")
Bedroom 3	3661 x 2368mm	(12' 0" x 7' 9")
Bedroom 4/Study	2642 x 2055mm	(8' 8" x 6' 9")
Bathroom	2150 x 1893mm	(7' 0" x 6' 2")

Ground Floor

Lounge	5482 x 4692mm	(17' 11" x 15' 4")
Kitchen/Dining	5612 x 3616mm	(18' 5" x 11' 10")

Ground Floor



First Floor

